



PRODUCT NOTICE

PN-1513

MODEL(S): CRS8203, CRS620S, CRS620H Screen Plants
AFFECTED Specific PINs:

TRX8203SCOKDJ0586	TRX8203SCOKEA0610
TRX8203SPOKEA0609	TRX620SSJOKED0642
TRX620SSEOKFB0743	TRX620HSLOKFG0773

SUBJECT: Screen motor overload relay re-wire

DATE: December 18, 2015

ISSUE:

Terex has discovered a wiring issue in the screen motor overload relay circuit on the above noted machine PINs. The screen motor starter needs to be linked to the overload relay via the auxiliary circuit breaker rather than directly as it is now wired. This situation presents no problem in the normal, safe operation of the plant, but should be corrected to bring the machines up to the current electrical revision.

Failure to complete this update will leave the overload relay incorrectly linked to the screen starter motor. The auxiliary contact must be in the circuit for the proper starting sequence of the screen motor.

ACTION:

Terex is asking the dealers for the plants involved to correct this wiring issue. The re-wire involves working inside the electrical panel on the plant so the work should only be performed by a certified electrical technician. Terex will allow up to one (1) hour of labor, per machine, to perform the wiring update. (See Reimbursement Information section below). The replacement work should be done as soon as possible, but no later than 30 days from the date of this Product Notice.

CONTINUED USE:

The affected screen plants may continue in production until the wiring update is performed. Reminder: All electrical safety precautions must be observed regarding work inside the plant electrical panel.

Terex MPS

909 17th St. NE Cedar Rapids, IA 52404 USA. Tel. 1-800-521-5600

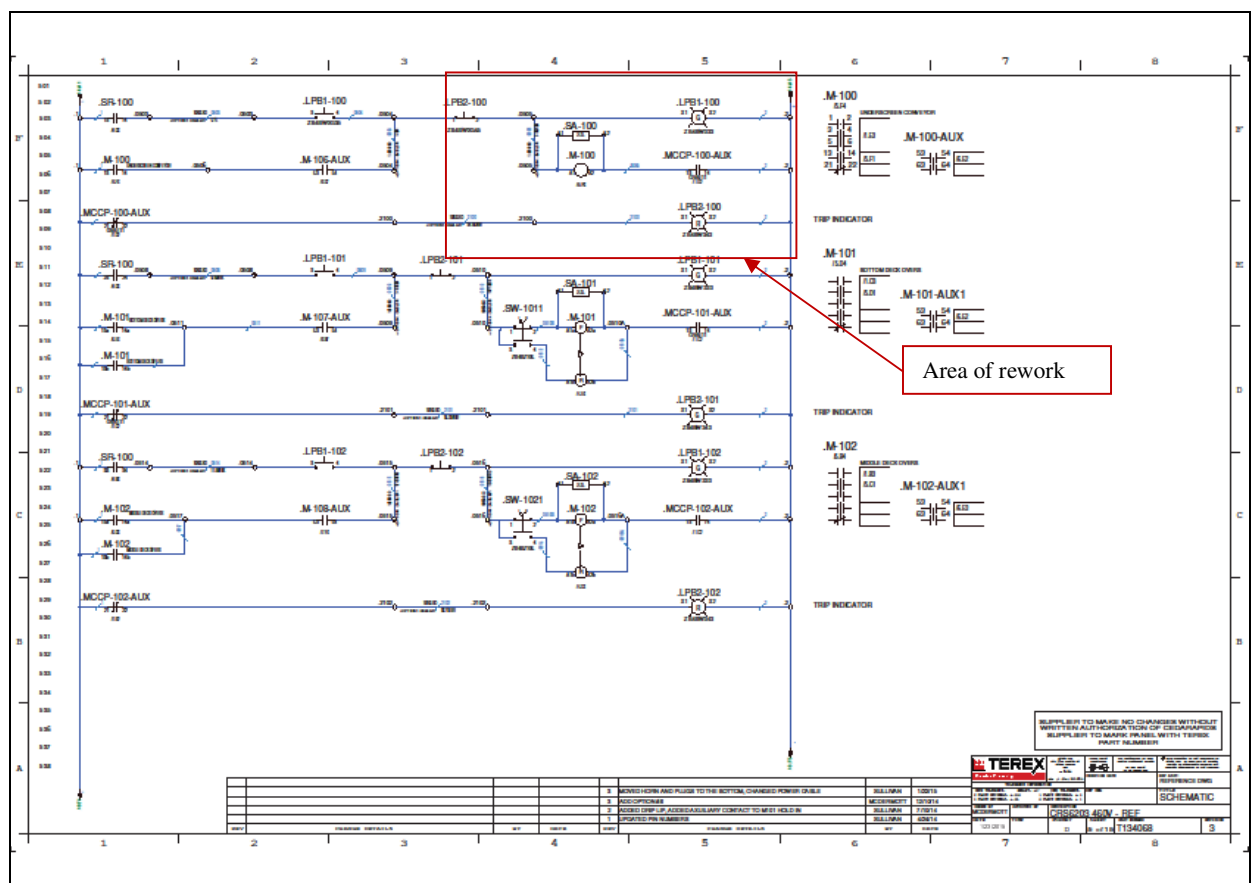


Supplemental Information to Dealer/Technician for Product Notice PN-1513

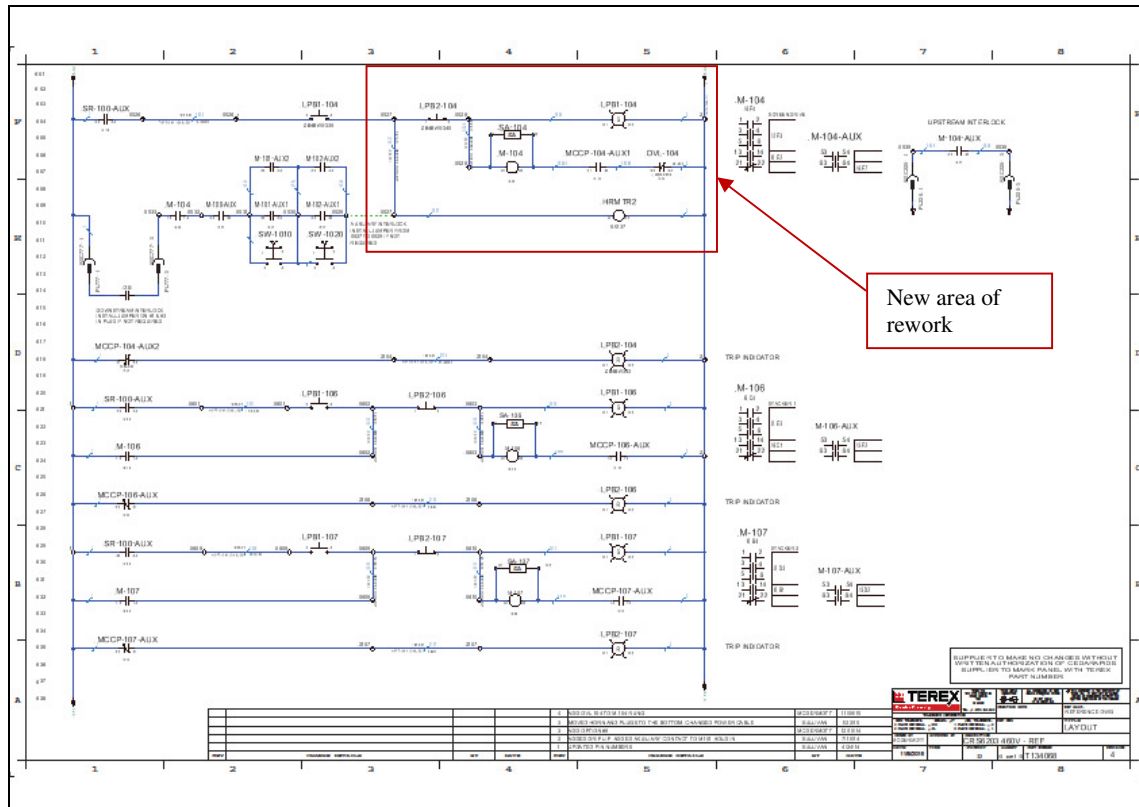


Before starting any work on the portable plant, complete Lockout/Tagout procedures on the electrical switchgear.

These instructions are to install one new wire and replace an existing wire in the electrical panel. The rework will isolate the Overload Relay from directly starting the screen motor if the Overload Relay reset button is manually pushed while there is power to the electrical panel. The plant electrical schematic is factory supplied and can be found inside the panel door.



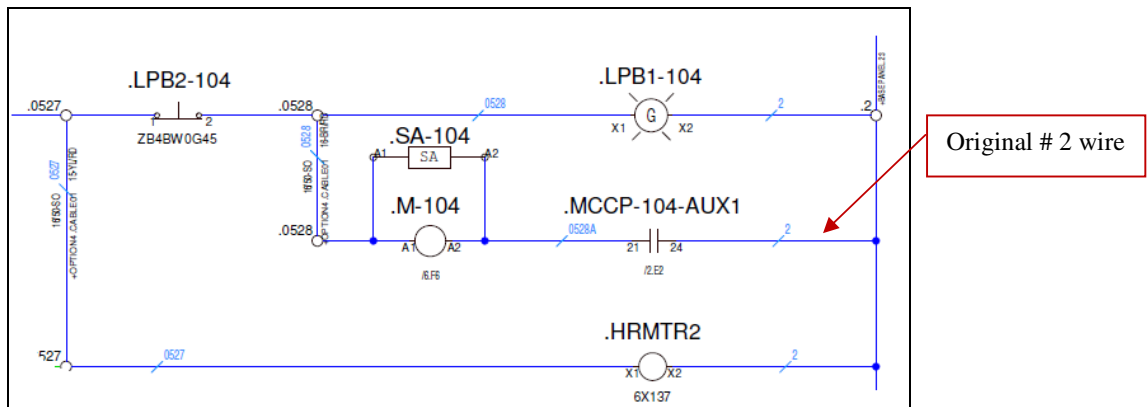
Original Schematic page 5 showing the area of the wiring rework.



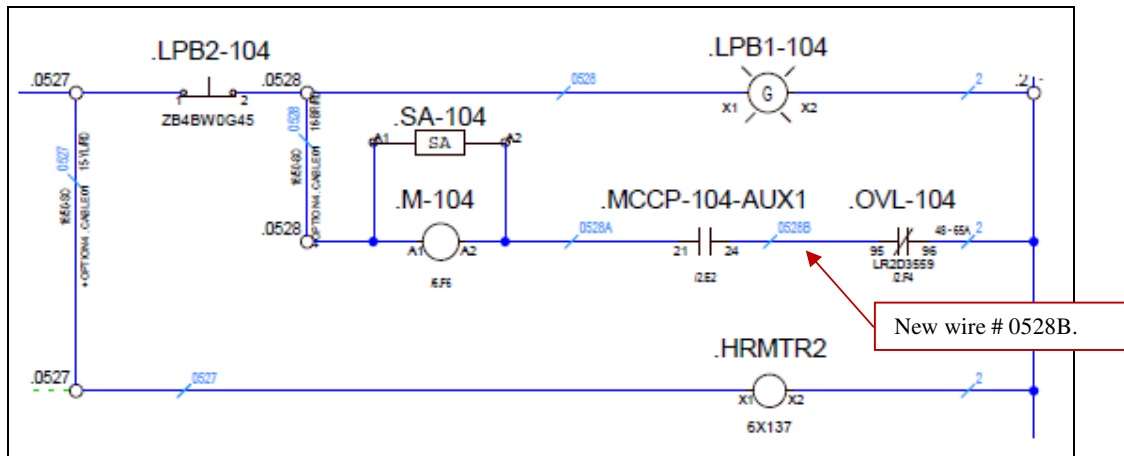
New Schematic showing the area of the wiring rework including Overload Relay 104.

Instructions

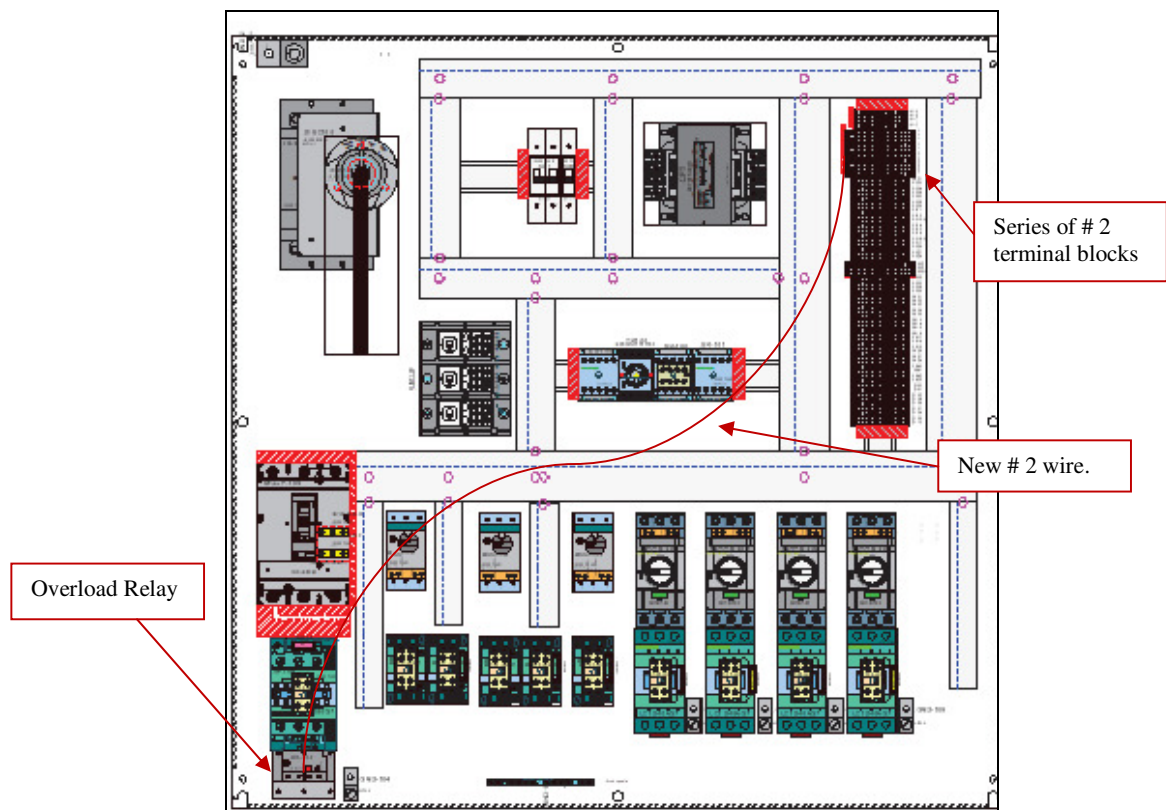
1. Remove the #2 wire from pin 24 on the MCCP104 Circuit Breaker Auxiliary Contact.



2. Install a new, red wire into pin 24 on this contact and make it long enough to reach pin 95 on Overload Relay 104. Label the new wire 0528B.



3. Make a new # 2 wire (longer) to reach from pin 96 on Overload Relay 104 to a # 2 terminal block in the main panel terminal blocks



New # 2 wire from Pin 96 on the Overload Relay 104 to a # 2 terminal block.

Reimbursement Information

Terex MPS will reimburse the dealer labor and travel for performing the wiring update, according to standard warranty policy guidelines. We will allow up to 1 hour labor per machine. The warranty AFA should be submitted within 30 days of completion of the wiring update, and a separate AFA must be submitted for each PIN listed above. In all cases, we request that you notify Terex immediately upon completion of the upgrade.

Please contact the Terex MPS Cedar Rapids facility for questions regarding this Product Notice.

Terex MPS

909 17th St. NE Cedar Rapids, IA 52404 USA. Tel. 1-800-521-5600
